

Town of Appleton Critical Habitat

LEGEND

- State roads
- Town roads
- Private roads
- Perennial streams
- Water
- MNAP Rare or Exemplary Natural Communities
- Focus Areas of Statewide Ecological Significance

ESSENTIAL WILDLIFE HABITAT

- Yellow Lampmussel
- Upland Sandpiper

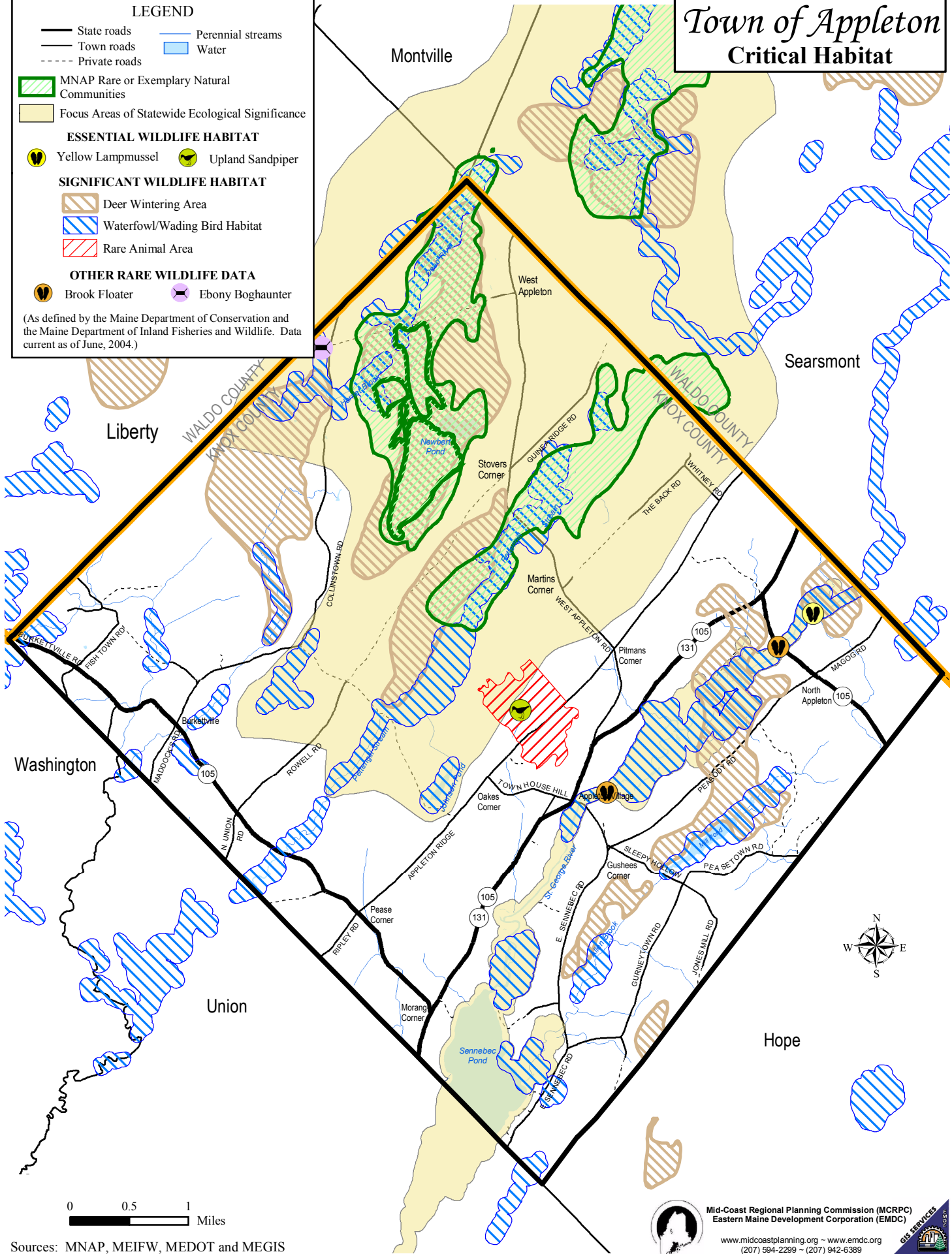
SIGNIFICANT WILDLIFE HABITAT

- Deer Wintering Area
- Waterfowl/Wading Bird Habitat
- Rare Animal Area

OTHER RARE WILDLIFE DATA

- Brook Floater
- Ebony Boghaunter

(As defined by the Maine Department of Conservation and the Maine Department of Inland Fisheries and Wildlife. Data current as of June, 2004.)



Sources: MNAP, MEIFW, MEDOT and MEGIS
Map revised: August, 2004

Mid-Coast Regional Planning Commission (MCRPC)
Eastern Maine Development Corporation (EMDC)

www.midcoastplanning.org - www.emdc.org
(207) 594-2299 - (207) 942-6389

See map disclaimer at end of the Executive Summary.